



**RoHS Compliant**

## Specifications

Electrical Ratings	3A @ 120VAC, 28VDC 1A @ 250VAC See Contract Options
Electrical Life	50,000 cycles typical
Contact Resistance	<20mΩ initial @ 2-4VDC, 100mA

Dielectric Strength	1500Vrms min
Insulation Resistance	>100MΩ min
Operating Temperature	-40°C to 85°C
Storage Temperature	-40°C to 85°C

## Materials

Actuator	Thermoplastic Polyester
Housing	Diallyl Phthalate (DAP)
Cover	Stainless Steel
Bushing	Brass, Nickel Plated
Contacts	Cooper Alloy, Silver Plated
Terminals	Brass, Silver Plated

## Ordering Information

1. Series	BNP	1	1	S	C	Q	E
BNP							
2. Number of Poles 1 = Single Pole							
3. Switch Function 0 = OFF - (ON) For SPST Only 1 = ON - (ON) For SPDT Only							
4. Bushing Blank = Panel Mount Frame S / U = 5.59mm, 10-48UNS / Non-threaded, flat T = 5.59mm, Non-threaded, round V / V1 = 7.87mm, ¼-40NS / Non-threaded, flat S9 = 3.20mm, Actuator only							
5. Terminals B = Solder Lug C = PC pin H = Horizontal mount, right angle PC pin; HS = Snap in V = Vertical mount, right angle PC pin; VS = Snap in A5 = PC pin with support bracket; A5S = Snap in support bracket							
6. Contacts Q = Silver plated R = Gold plated G = Gold over Silver plated							
7. Epoxy Seal E = Epoxy Seal							
8. Cap / Frame					Actuator Cap / Frame Colors		
C84							
C85							
C87 Only used with V & V1 bushings							
F86 = Snap in panel mount with frame					See cap options for color availability		

# BNP

## Sub-Miniature Pushbutton

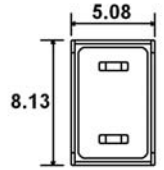
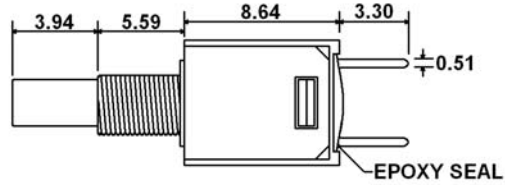
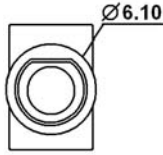
### Switch Function



**SPST**



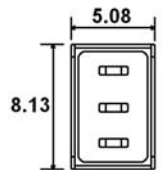
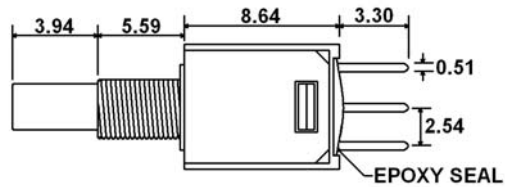
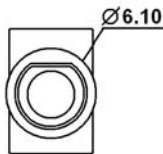
Function	Pushbutton Position	
1	OFF	(ON)
Terminals	--	1-3



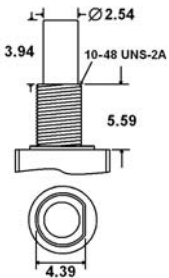
**SPDT**



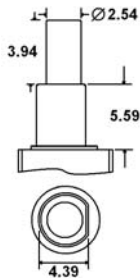
Function	Pushbutton Position	
1	ON	(ON)
Terminals	2-1	2-3



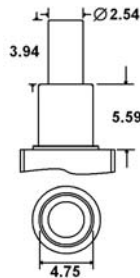
### Bushing Options



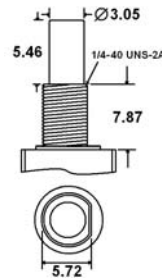
**S**



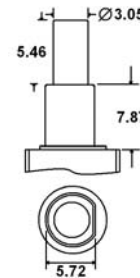
**U**



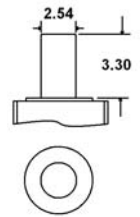
**T**



**V**

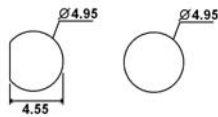


**V1**

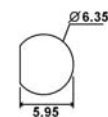


**SP**

### Panel Mounting

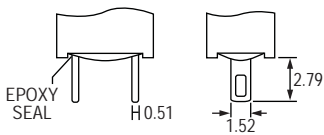


Used with S, U & T Bushings

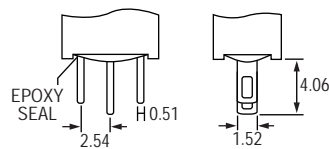


Used with V & V1 Bushings

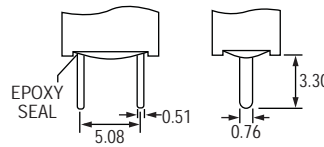
### Terminal Options



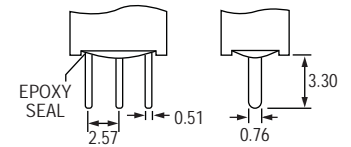
**B - SPST**



**B - SPDT**

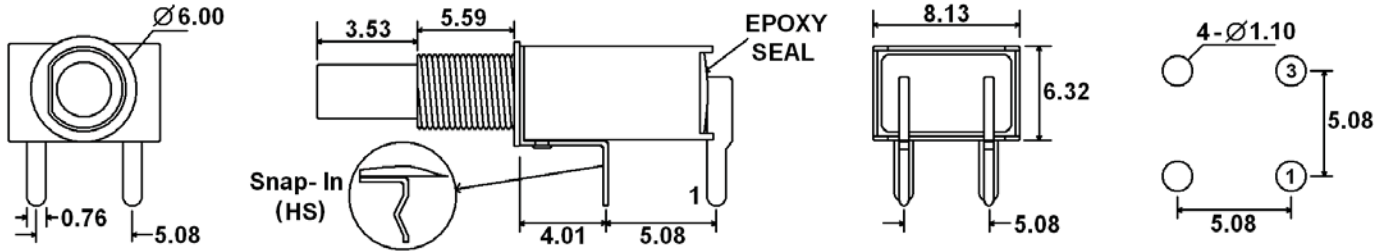


**C - SPST**

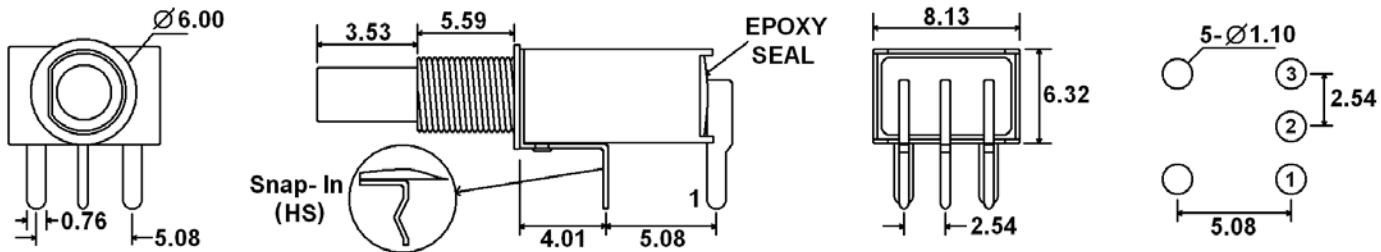


**C - SPDT**

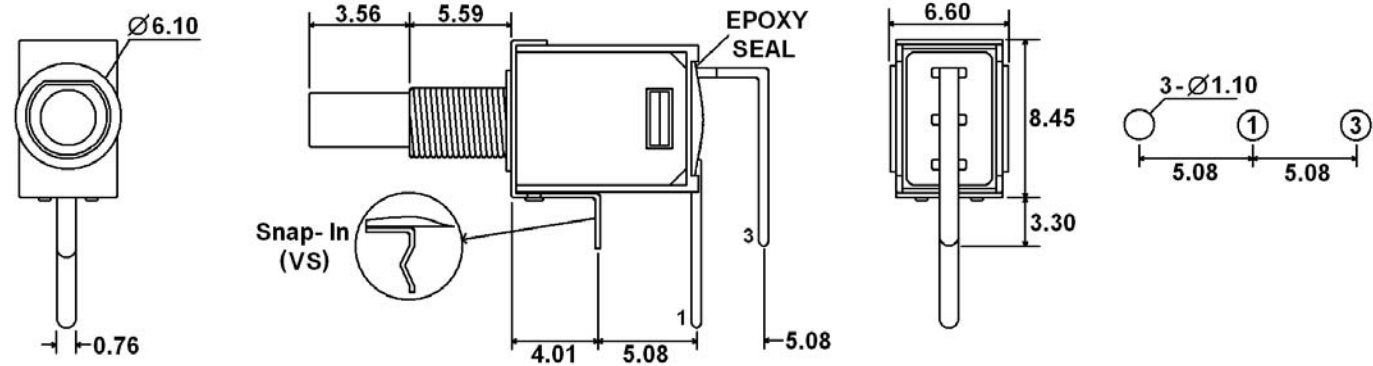
**Terminal Options**



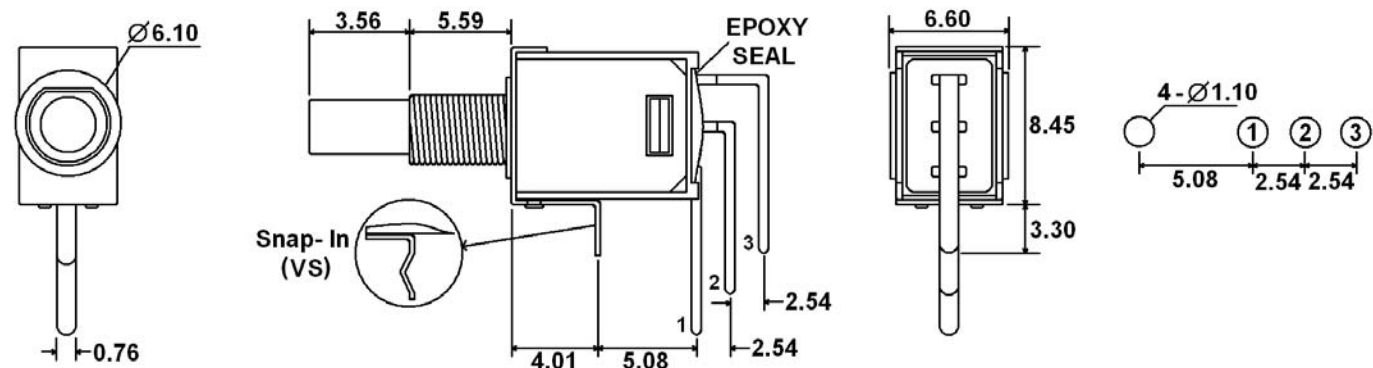
*H (HS - Snap In) = Horizontal mount, right angle PC pins, single pole, single throw*



*H (HS - Snap In) = Horizontal mount, right angle PC pins, single pole, double throw*



*V (VS - Snap In) = Vertical mount, right angle PC pins, single pole, single throw*

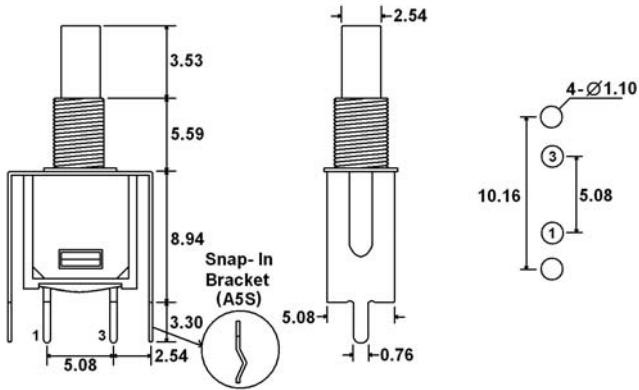


*V (VS - Snap In) = Vertical mount, right angle PC pins, single pole, double throw*

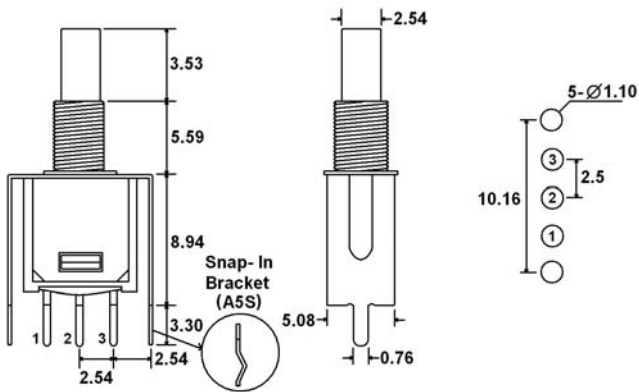
# BNP

## Sub-Miniature Pushbutton

### Terminal Options



**A5 (A5S - Snap in bracket) = PC pins with support bracket, single pole single throw**

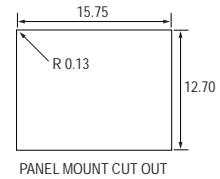
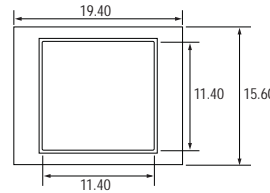
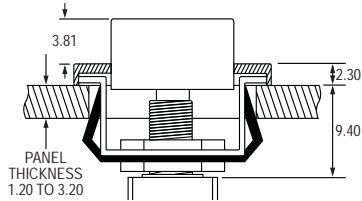


**A5 (A5S - Snap in bracket) = PC pins with support bracket, single pole double throw**

### Contact Options

Designator	Contact Material	Terminal Material	Electrical Ratings
Q	Silver Plating	Silver Plating	3A @ 120VAC, 28VDC; 1A @ 250VAC
R	Gold over Nickel Plating	Gold over Nickel Plating	0.4VA max @ 20VAC or VDC max
G	Gold over Silver Plating	Gold over Silver Plating	0.4VA max @ 20VAC or VDC max or 3A @ 120VAC, 28VDC; 1A @ 250VAC

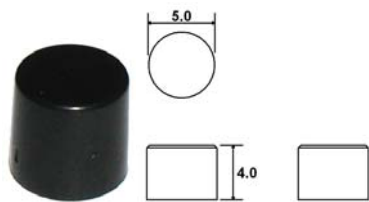
## Frame Options



**F86\_\_** ← Insert cap and frame colors here

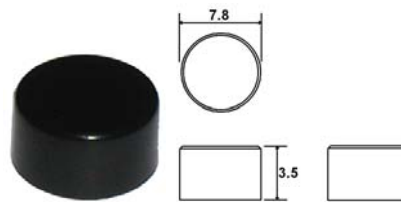
Cap Color / Frame Color  
1 = White, 2 = Black, 3 = Red  
Contact Factory for other available colors

## Cap Options



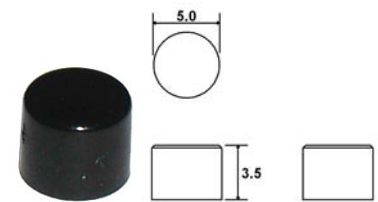
**C84\_**

1 = White, 2 = Black, 3 = Red  
Contact Factory for other available colors



**C85\_**

1 = White, 2 = Black, 3 = Red  
Contact Factory for other available colors

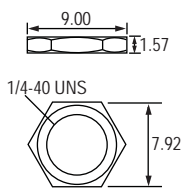


**C87\_**

1 = White, 2 = Black, 3 = Red  
Contact Factory for other available colors  
Only for use with V & V1 Bushings

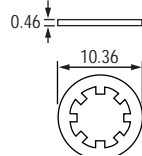
## Hardware

Two hex nuts, one lock washer & one locking ring supplied standard with threaded bushings



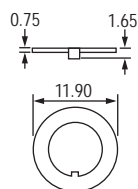
**Hex Nut**

For use with S & V Bushing



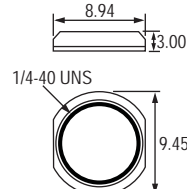
**Lock Washer**

For use with S & V Bushing



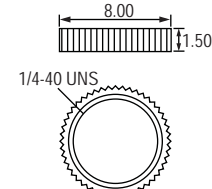
**Locking Ring**

For use with S & V Bushing



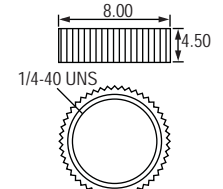
**Dress Nut**

For use with V Bushing



**Knurled Nut**

For use with V Bushing



**Knurled Nut**

For use with V Bushing